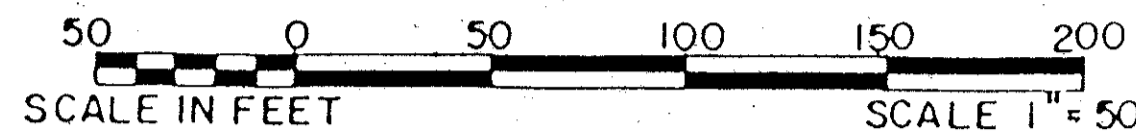


LAKEFIELD OF THE LANDINGS AT WELLINGTON P.U.D. - PLAT 1

BEING THE ABANDONED NORTH CLUB DRIVE AND SOUTH CLUB ROAD, A PORTION OF AERO CLUB DRIVE OF THE LANDINGS, AT WELLINGTON P.U.D., RECORDED IN PLAT BOOK 53, PAGES 159 AND 160 OF THE PUBLIC RECORDS OF PALM BEACH COUNTY, FLORIDA AND OTHER LANDS.

IN PART OF SECTION 7, TOWNSHIP 44 SOUTH, RANGE 41 EAST
PALM BEACH COUNTY, FLORIDA
IN SEVEN SHEETS SHEET NO. 6

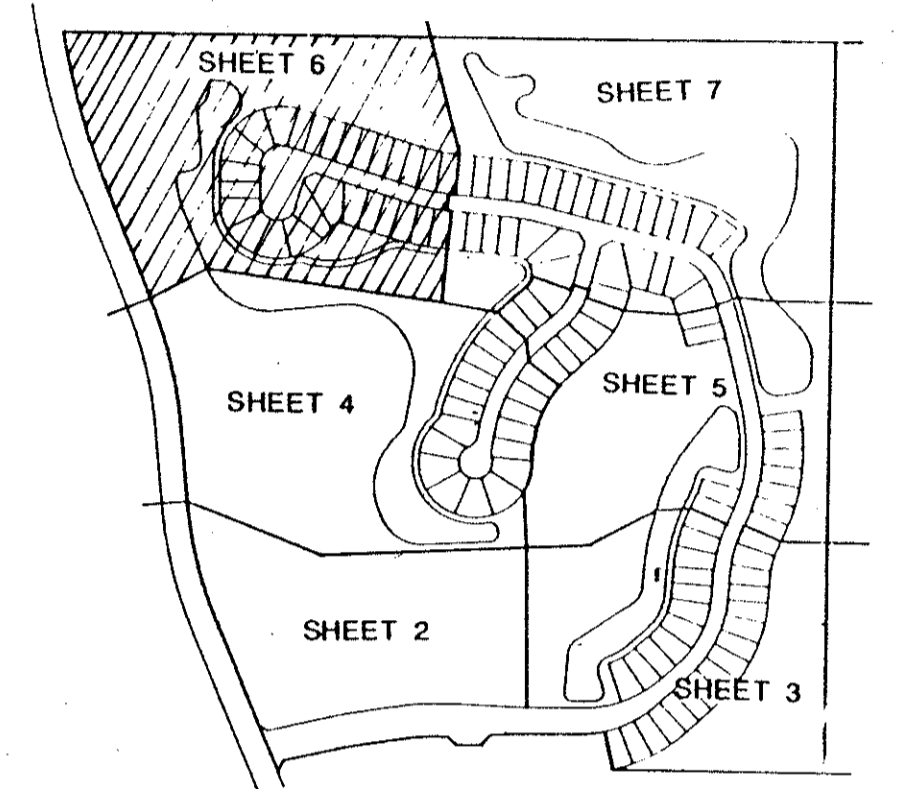
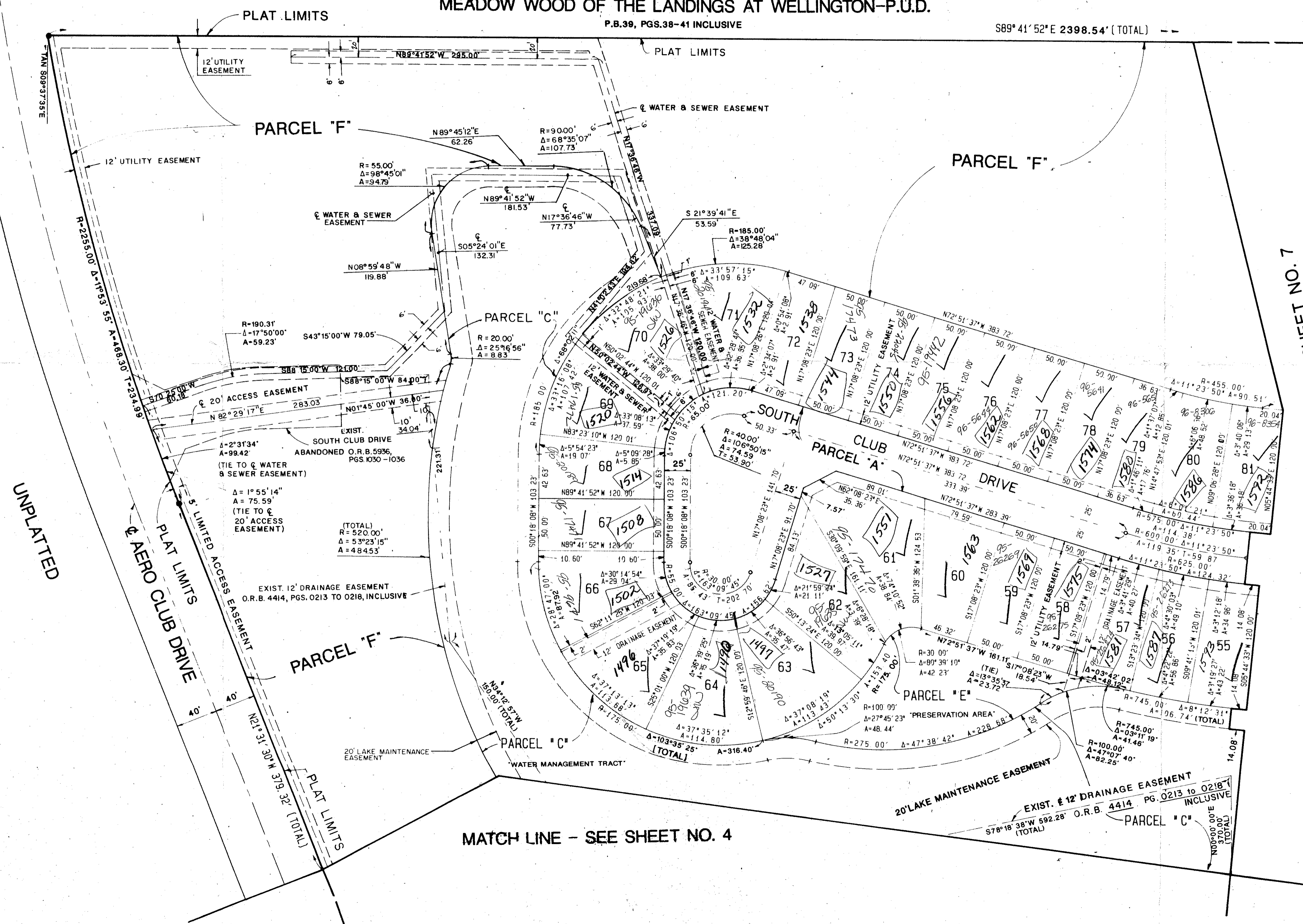
GEE & JENSON
ENGINEERS - ARCHITECTS - PLANNERS, INC.
WEST PALM BEACH, FLORIDA
AUGUST 1988



MEADOW WOOD OF THE LANDINGS AT WELLINGTON-P.U.D.

P.B. 39, PGS. 38-41 INCLUSIVE

S89°41'52"E 2398.54' (TOTAL)



KEY MAP

MATCH LINE - SEE SHEET NO. 7

MATCH LINE - SEE SHEET NO. 4

UNPLATTED

SUBDIVISION * at Wellington P.U.D.
BOOK 63 PAGE 25
RE 78-287
TAZ 727
Sams co dup - 33414

COMPUTED DWL/CAD
DRAWN DWL/CAD
CHECKED T.H.D.
APPROVED J.L.D.

ADD. BY
CHECKED BY

0269-004
RE 78-287

63/25

LAKE MAINTAINED BY: FOURTH WELLINGTON, INC.

LAKEFIELD OF THE LANDINGS AT WELLINGTON-PLAT 1

NOTE: ALL LINES ARE NON-RADIAL UNLESS OTHERWISE NOTED.

STATE OF FLORIDA
COUNTY OF PALM BEACH
This plat was filed for
record at _____ M. this _____ day
of _____ 1988, and duly
recorded in Plat Book No. _____
on Page _____ thru _____.

JOHN B. DUNKLE
Clerk Circuit Court

By: _____ D.C.